

Please check the examination details below before entering your candidate information

Candidate surname

Other names

Centre Number

Candidate Number

Pearson Edexcel
Level 1/Level 2 GCSE (9–1)

--	--	--	--	--

--	--	--	--	--

Tuesday 6 November 2018

Morning (Time: 1 hour 30 minutes)

Paper Reference **1MA1/1H**

Mathematics

Paper 1 (Non-Calculator)

Higher Tier

You must have: Ruler graduated in centimetres and millimetres,
protractor, pair of compasses, pen, HB pencil, eraser.
Tracing paper may be used.

Total Marks

Instructions

- Use **black** ink or ball-point pen.
- **Fill in the boxes** at the top of this page with your name, centre number and candidate number.
- Answer **all** questions.
- Answer the questions in the spaces provided
– *there may be more space than you need.*
- You must **show all your working**.
- Diagrams are **NOT** accurately drawn, unless otherwise indicated.
- **Calculators may not be used.**



Information

- The total mark for this paper is 80
- The marks for **each** question are shown in brackets
– *use this as a guide as to how much time to spend on each question.*

Advice

- Read each question carefully before you start to answer it.
- Keep an eye on the time.
- Try to answer every question.
- Check your answers if you have time at the end.

Turn over ►

P55584A

©2018 Pearson Education Ltd.

6/17/17/17/1/C2/




Pearson

Answer ALL questions.

Write your answers in the spaces provided.

You must write down all the stages in your working.

1 Work out the value of $\frac{3^7 \times 3^{-2}}{3^3}$

$$= \frac{3^{7+(-2)}}{3^3}$$

$$= \frac{3^5}{3^3} = 3^{5-3} = 3^2$$

(Total for Question 1 is 2 marks)

2 $v^2 = u^2 + 2as$

$u = 12$ $a = -3$ $s = 18$

(a) Work out a value of v .

$$v^2 = (12)^2 + 2(-3)(18)$$

$$= 144 + 2(-54)$$

$$= 144 - 108$$

$$= 36$$

$$v = \sqrt{36} = \pm 6$$

$$6 \text{ or } -6$$

(2)

(b) Make s the subject of $v^2 = u^2 + 2as$

$$v^2 - u^2 = 2as$$

$$\div 2a \qquad \div 2a$$

$$\frac{v^2 - u^2}{2a} = s$$

$$s = \frac{v^2 - u^2}{2a}$$

(2)

(Total for Question 2 is 4 marks)

DO NOT WRITE IN THIS AREA

DO NOT WRITE IN THIS AREA

DO NOT WRITE IN THIS AREA



- 3 A bonus of £2100 is shared by 10 people who work for a company.
40% of the bonus is shared equally between 3 managers.
The rest of the bonus is shared equally between 7 salesmen.

One of the salesmen says,

“If the bonus is shared equally between all 10 people I will get 25% more money.”

Is the salesman correct?

You must show how you get your answer.

Managers

$$\begin{aligned} 40\% \text{ of } £2100 &= \boxed{£840} \\ 10\% \text{ of } £2100 &= £210 \end{aligned} \quad \begin{matrix} \times 4 \\ \times 4 \end{matrix}$$

Salesmen

$$£2100 - £840 = £1260$$

$$£1260 \div 7 = \boxed{£180}$$

$$\begin{array}{r} 180 \\ 7 \overline{)1260} \end{array}$$

Shared equally

$$£2100 \div 10 = £210$$

$$£210 - £180 = £30$$

$$\frac{£30}{£180} \times 100$$

$$\frac{1}{6} \times 100 = 0.1\dot{6} \times 100 = 16.\dot{6}\%$$

$$\begin{array}{r} 0.166 \\ 6 \overline{)1'0'0'0} \end{array}$$

$16.\dot{6}\% < 25\%$ more
Salesmen is incorrect.

(Total for Question 3 is 5 marks)



4 It would take 120 minutes to fill a swimming pool using water from 5 taps.

(a) How many minutes will it take to fill the pool if only 3 of the taps are used?

$$\begin{array}{l} \div 5 \left(\begin{array}{l} 5 \text{ taps} = 120 \text{ mins} \\ 1 \text{ tap} = 600 \text{ mins} \end{array} \right) \times 5 \\ \times 3 \left(\begin{array}{l} 3 \text{ taps} = 200 \text{ mins} \end{array} \right) \div 3 \end{array}$$

..... 200 minutes
(2)

(b) State one assumption you made in working out your answer to part (a).

Water from the taps flow at the same rate.

(1)

(Total for Question 4 is 3 marks)

5 A plane travels at a speed of 213 miles per hour.

(a) Work out an estimate for the number of seconds the plane takes to travel 1 mile.

$$213 \approx 200$$

$$\frac{200 \text{ miles}}{1 \text{ hour}} = \frac{200 \text{ miles}}{60 \text{ mins}} = \frac{200 \text{ miles}}{3600 \text{ s}}$$

$\xrightarrow{\times 60}$ $\xrightarrow{\times 60}$

$$\div 200 \left(\begin{array}{l} 200 \text{ miles} = 3600 \text{ s} \\ 1 \text{ mile} = 18 \text{ s} \end{array} \right) \div 200$$

..... 18 seconds
(3)

(b) Is your answer to part (a) an underestimate or an overestimate?
Give a reason for your answer.

Underestimate. Number of miles was rounded down.

(1)

(Total for Question 5 is 4 marks)



6 Solve the simultaneous equations

$$\begin{aligned}5x + y &= 21 \\ x - 3y &= 9 \quad \times 5\end{aligned}$$

$$\begin{aligned}5x + y &= 21 \\ \underline{5x - 15y} &= 45 \\ 16y &= -24 \\ \div 16 & \qquad \qquad \div 16 \\ y &= \frac{-24}{16} = \frac{-3}{2} = -1.5\end{aligned}$$

$$\begin{aligned}5x + y &= 21 \\ 5x + (-1.5) &= 21 \\ 5x - 1.5 &= 21 \\ +1.5 \quad +1.5 & \\ 5x &= 22.5 \\ \div 5 & \qquad \qquad \div 5\end{aligned}$$

$$\begin{array}{r} 4.5 \\ 5 \overline{) 22.5} \\ \underline{20} \\ 22 \\ \underline{20} \\ 2 \\ \underline{2} \\ 0 \end{array}$$

$x = 4.5$

$x = 4.5$

$y = -1.5$

(Total for Question 6 is 3 marks)

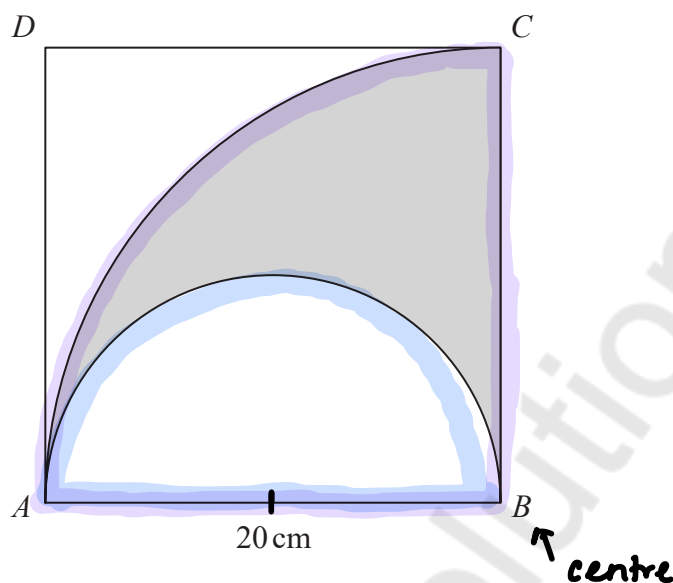
DO NOT WRITE IN THIS AREA

DO NOT WRITE IN THIS AREA

DO NOT WRITE IN THIS AREA



- 7 The diagram shows a square $ABCD$ with sides of length 20 cm. It also shows a semicircle and an arc of a circle.



AB is the diameter of the semicircle.
 AC is an arc of a circle with centre B .

Show that $\frac{\text{area of shaded region}}{\text{area of square}} = \frac{\pi}{8}$

$$\text{Area of shaded region} = \text{Area } \frac{1}{4} \text{ circle} - \text{Area semi-circle}$$

$$\begin{aligned} \text{Area } \frac{1}{4} \text{ circle} &= \pi r^2 \div 4 \quad r = 20 \\ &= \pi (20)^2 \div 4 \\ &= 400\pi \div 4 \\ &= 100\pi \text{ cm}^2 \end{aligned}$$

$$\begin{aligned} \text{Area semi-circle} &= \pi r^2 \div 2 \quad r = 10 \\ &= \pi (10)^2 \div 2 \\ &= 100\pi \div 2 \\ &= 50\pi \text{ cm}^2 \end{aligned}$$

$$\begin{aligned} \text{Area of square} &= l \times w \\ &= 20 \times 20 \\ &= 400 \text{ cm}^2 \end{aligned}$$

$$\begin{aligned} \frac{\text{Shaded}}{\text{square}} &= \frac{50\pi \div 50}{400 \div 50} \\ &= \frac{\pi}{8} \end{aligned}$$

$$\text{Shaded area} = 100\pi - 50\pi = 50\pi \text{ cm}^2$$

(Total for Question 7 is 4 marks)



DO NOT WRITE IN THIS AREA

DO NOT WRITE IN THIS AREA

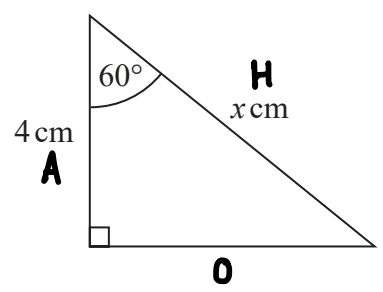
DO NOT WRITE IN THIS AREA

8 (a) Write down the exact value of $\tan 45^\circ$

1

(1)

Here is a right-angled triangle.



$\cos 60^\circ = 0.5$

(b) Work out the value of x .

$\cos \theta = \frac{A}{H}$

$\cos (60) = \frac{4}{x}$

$x = \frac{4}{\cos (60)}$

$x = \frac{4}{0.5} = 8$

8

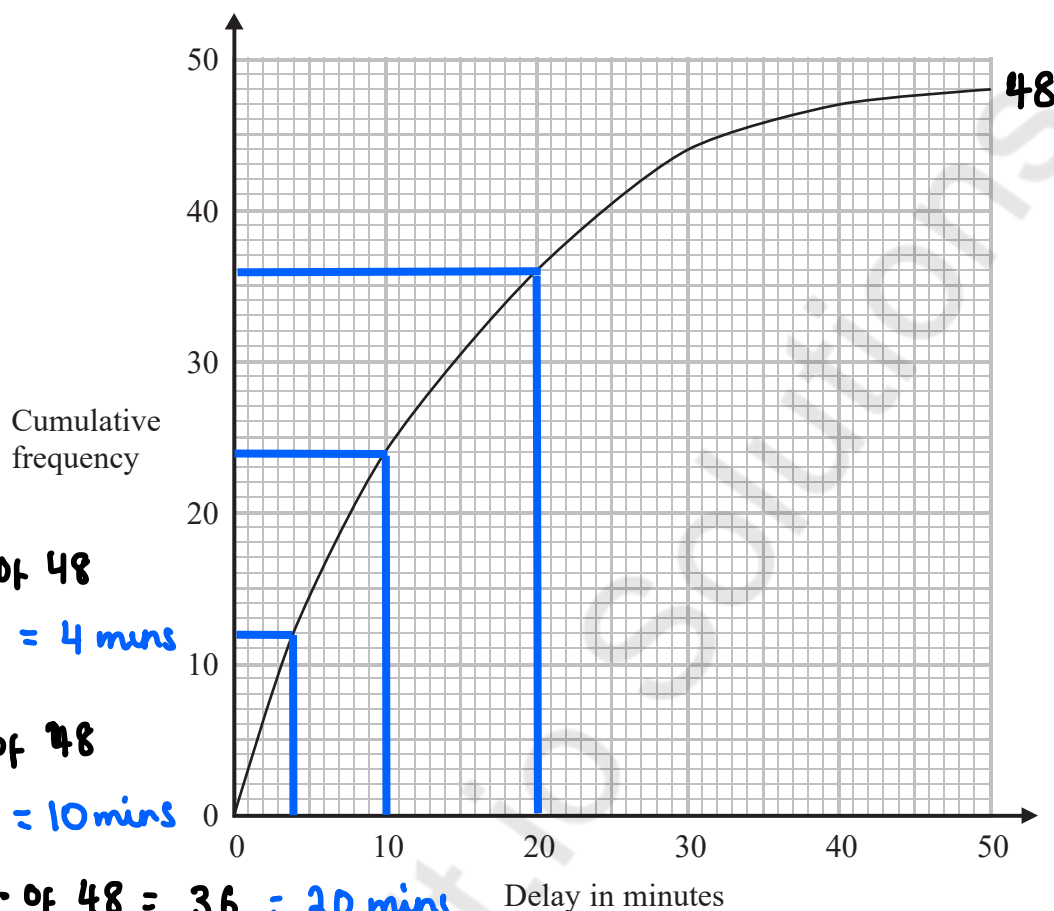
(2)

(Total for Question 8 is 3 marks)



9 The times that 48 trains left a station on Monday were recorded.

The cumulative frequency graph gives information about the numbers of minutes the trains were delayed, correct to the nearest minute.



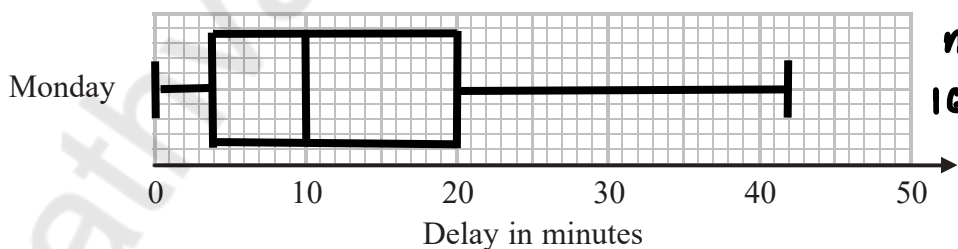
$LQ = \frac{1}{4}$ of 48
 $= 12 = 4 \text{ mins}$

$m = \frac{1}{2}$ of 48
 $= 24 = 10 \text{ mins}$

$UQ = \frac{3}{4}$ of 48 = 36 = 20 mins

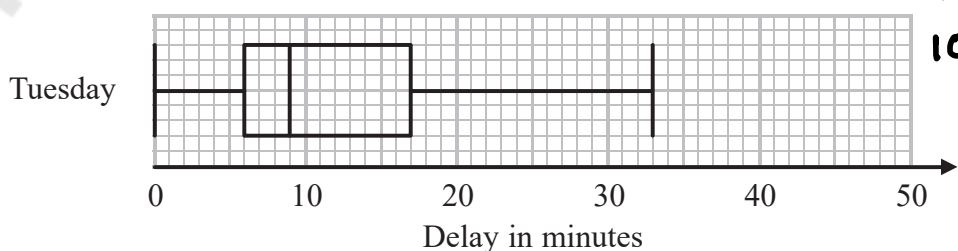
The shortest delay was 0 minutes.
 The longest delay was 42 minutes.

(a) On the grid below, draw a box plot for the information about the delays on Monday.



Median = 10
 $IQR = UQ - LQ$
 $= 20 - 4$
 $= 16$
 (3)

48 trains left the station on Tuesday.
 The box plot below gives information about the delays on Tuesday.



Median = 9
 $IQR = 17 - 6$
 $= 11$



(b) Compare the distribution of the delays on Monday with the distribution of the delays on Tuesday.

Median on Monday is greater than the median on Tuesday

Interquartile range on Monday is greater than on Tuesday.

(2)

Mary says,

“The longest delay on Tuesday was 33 minutes.

This means that there must be some delays of between 25 minutes and 30 minutes.”

(c) Is Mary right?

You must give a reason for your answer.

No. 12 trains were delayed between 17 and 33 minutes.

(1)

(Total for Question 9 is 6 marks)

10 (a) Simplify $\frac{x-1}{5(x-1)^2}$

$$\frac{\cancel{x-1}}{5(x-1)\cancel{(x-1)}} = \frac{1}{5(x-1)}$$

(1)

(b) Factorise fully $50 - 2y^2$

$$2(25 - y^2)$$

D.O.T.S

$$2(5+y)(5-y)$$

(2)

(Total for Question 10 is 3 marks)



11 Jack and Sadia work for a company that sells boxes of breakfast cereal.

The company wants to have a special offer.

$$100\text{g} = \text{£}1$$

Here is Jack's idea for the special offer.

Put 25% more cereal into each box and do **not** change the price.

Here is Sadia's idea.

Reduce the price and do **not** change the amount of cereal in each box.

Sadia wants her idea to give the same value for money as Jack's idea.

By what percentage does she need to reduce the price?

Jack's

$$100\text{g} + 25\text{g} = 125\text{g}$$

$$\begin{array}{l} \div 5 \left(\begin{array}{l} 125\text{g} = \text{£}1 \\ 25\text{g} = 20\text{p} \end{array} \right) \div 5 \\ \times 4 \left(\begin{array}{l} 100\text{g} = 80\text{p} \end{array} \right) \times 4 \end{array}$$

Sadia

$$100\text{g} = 80\text{p}$$

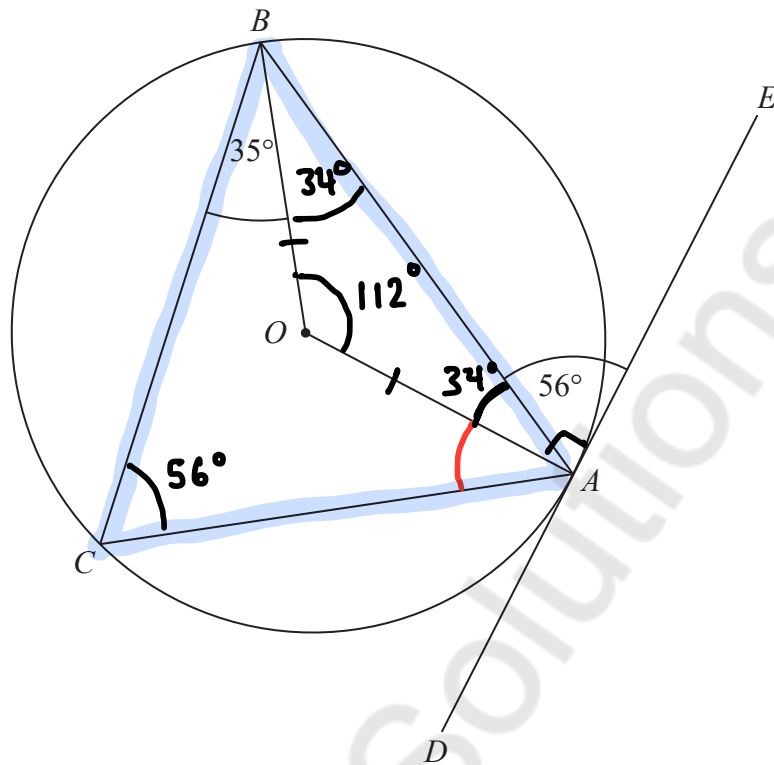
$$\text{£}1 - 80\text{p} = 20\text{p}$$

$$\frac{20\text{p}}{100\text{p}} \times 100 = 20\%$$

..... %

(Total for Question 11 is 3 marks)





A , B and C are points on the circumference of a circle, centre O .
 DAE is the tangent to the circle at A .

Angle $BAE = 56^\circ$
 Angle $CBO = 35^\circ$

Work out the size of angle CAO .
 You must show all your working.

Angle $BAO = 90^\circ - 56^\circ = 34^\circ$ Tangent meets the radius at 90°

Angle $OBA = 34^\circ$ Base angles of isosceles are equal.

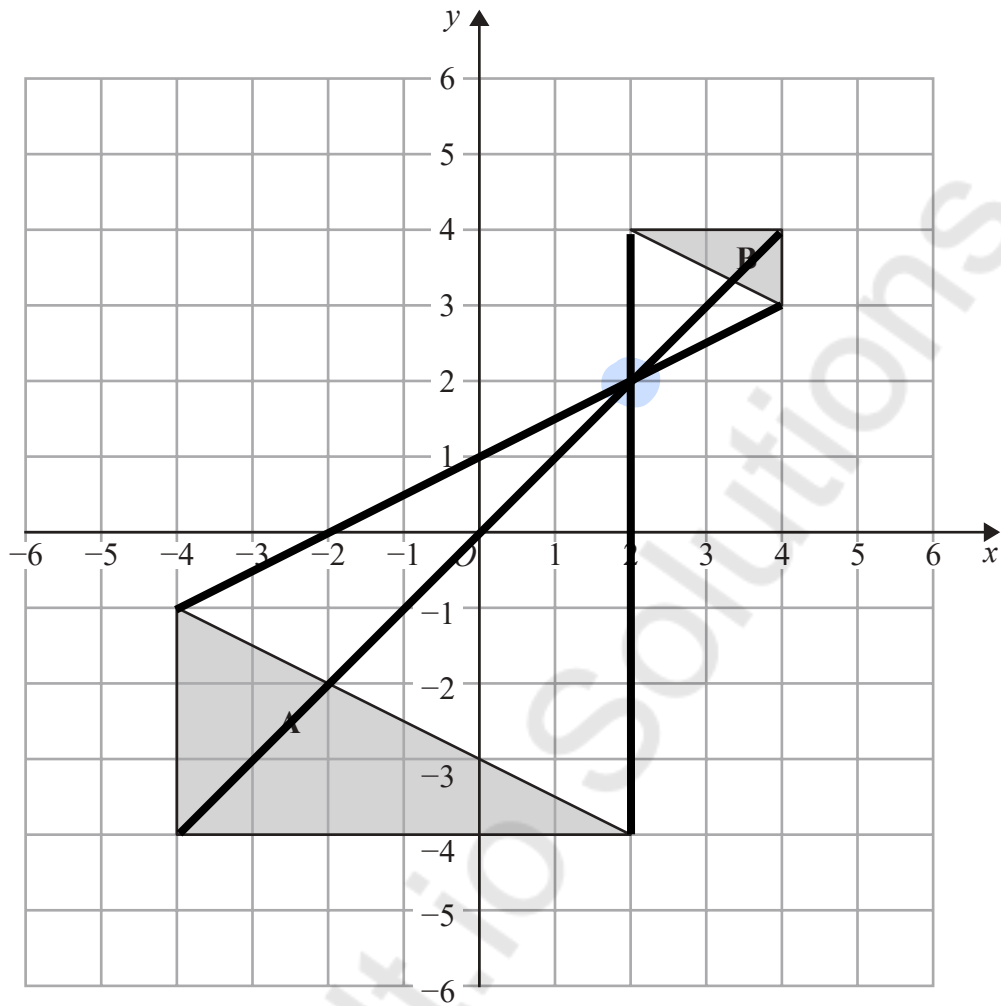
Angle $BOA = 180 - (34 + 34)$ Angles in a triangle sum to 180°
 $= 180 - 68$
 $= 112^\circ$

Angle $BCA = 56^\circ$ Angle at the circumference is half of the angle at the centre

Angle $CAO = 180^\circ - (35 + 34 + 34 + 56)$ 21
 $= 21^\circ$

(Total for Question 12 is 3 marks)





Describe fully the single transformation that maps triangle A onto triangle B.

Enlargement, SF $\frac{1}{3}$, centre (2, 2)

(Total for Question 13 is 2 marks)



DO NOT WRITE IN THIS AREA

14 (a) Work out the value of $\left(\frac{16}{81}\right)^{\frac{3}{4}}$ $x^{\frac{a}{b}} = ({}^b\sqrt{x})^a$

$$\left(4\sqrt{\frac{16}{81}}\right)^3 = \left(\frac{2}{3}\right)^3 = \frac{8}{27}$$

$$\frac{8}{27}$$

(2)

$$3^a = \frac{1}{9} \quad 3^b = 9\sqrt{3} \quad 3^c = \frac{1}{\sqrt{3}}$$

(b) Work out the value of $a + b + c$

$$3^a = \frac{1}{3^2}$$

$$3^b = (3^2)(3^{\frac{1}{2}})$$

$$3^c = \frac{1}{3^{\frac{1}{2}}}$$

$$3^{-2} = \frac{1}{3^2}$$

$$3^b = 3^{2+\frac{1}{2}}$$

$$3^{-\frac{1}{2}} = \frac{1}{3^{\frac{1}{2}}}$$

$$a = -2$$

$$3^b = 3^{2\frac{1}{2}}$$

$$c = -\frac{1}{2}$$

$$b = 2\frac{1}{2}$$

$$\begin{aligned} a + b + c &= -2 + 2\frac{1}{2} - \frac{1}{2} \\ &= 0 \end{aligned}$$

$$0$$

(2)

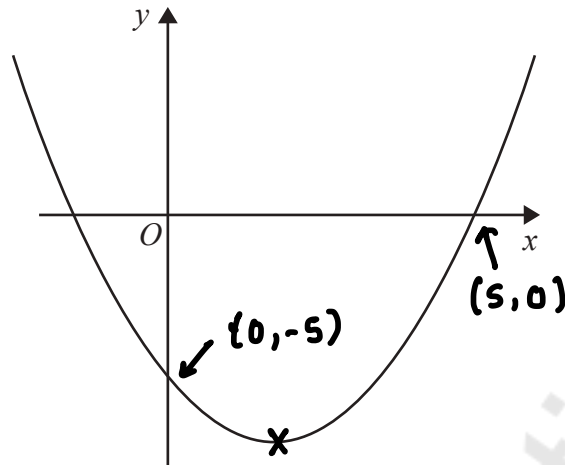
(Total for Question 14 is 4 marks)

DO NOT WRITE IN THIS AREA

DO NOT WRITE IN THIS AREA



17 Here is a sketch of a curve.



The equation of the curve is $y = x^2 + ax + b$ where a and b are integers.

The points $(0, -5)$ and $(5, 0)$ lie on the curve.

Find the coordinates of the turning point of the curve.

$$(0, -5) \quad x=0 \quad y=-5$$

$$-5 = (0)^2 + a(0) + b$$

$$-5 = b$$

$$(5, 0) \quad x=5 \quad y=0$$

$$0 = (5)^2 + a(5) - 5$$

$$0 = 25 + 5a - 5$$

$$0 = 20 + 5a$$

$$-20 \quad -20$$

$$-20 = 5a$$

$$\div 5$$

$$-4 = a$$

$$y = x^2 - 4x - 5$$

$$y = (x-2)^2 - 4 - 5$$

$$y = (x-2)^2 - 9$$

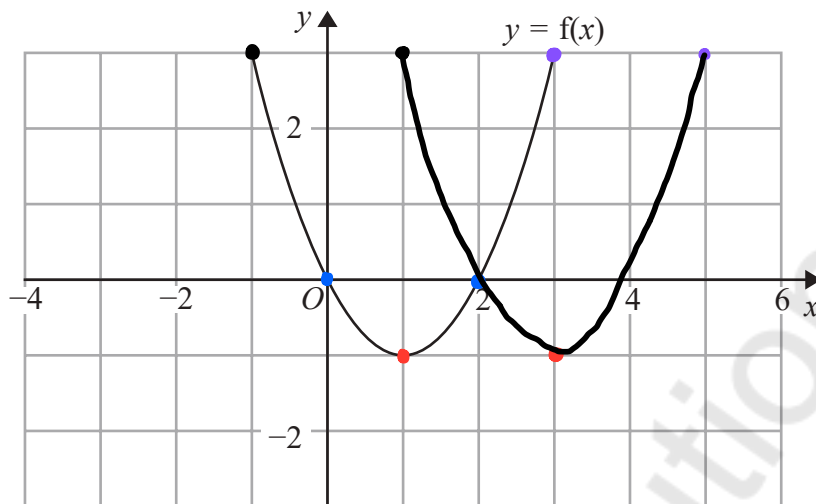
$$\text{Turning point} = (2, -9)$$

(2 , -9)

(Total for Question 17 is 4 marks)



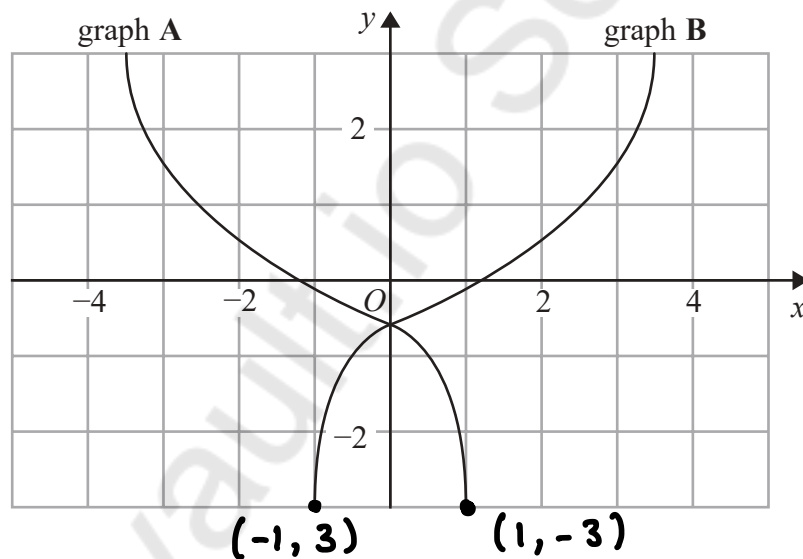
18 The graph of $y = f(x)$ is shown on the grid below.



(a) On the grid above, sketch the graph of $y = f(x - 2)$

↳ 2 right

(1)



On the grid, graph A has been reflected to give graph B.

The equation of graph A is $y = g(x)$

(b) Write down the equation of graph B.

$$x \quad x - 1 = -x$$

$$y = g(-x)$$

$$y = g(-x)$$

(1)

(Total for Question 18 is 2 marks)



19 For all values of x

$$f(x) = (x + 1)^2 \quad \text{and} \quad g(x) = 2(x - 1)$$

(a) Show that $gf(x) = 2x(x + 2)$

$$\begin{aligned} f(x) &= (x + 1)^2 \\ gf(x) &= 2((x + 1)^2 - 1) \\ &= 2((x + 1)(x + 1) - 1) \\ &= 2((x^2 + x + x + 1) - 1) \\ &= 2((x^2 + 2x + 1) - 1) \\ &= 2(x^2 + 2x) \\ &= 2x(x + 2) \end{aligned}$$

(2)

(b) Find $g^{-1}(7)$

$$\begin{aligned} g(x) &= 2(x - 1) \\ &= 2x - 2 \\ y &= 2x - 2 \\ x &= \frac{y + 2}{2} \\ x + 1 &= \frac{y + 2}{2} + 1 \\ \div 2 & \quad \div 2 \\ \frac{x + 2}{2} &= y \\ g^{-1}(x) &= \frac{x + 2}{2} \\ g^{-1}(7) &= \frac{7 + 2}{2} = \frac{9}{2} = 4.5 \end{aligned}$$

4.5

(2)

(Total for Question 19 is 4 marks)



20 Show that $\frac{(\sqrt{18} + \sqrt{2})^2}{\sqrt{8} - 2}$ can be written in the form $a(b + \sqrt{2})$ where a and b are integers.

$$\sqrt{18} = \sqrt{9} \sqrt{2} = 3\sqrt{2}$$

$$\sqrt{8} = \sqrt{4} \sqrt{2} = 2\sqrt{2}$$

$$\frac{(3\sqrt{2} + \sqrt{2})^2}{2\sqrt{2} - 2} = \frac{(4\sqrt{2})^2}{2\sqrt{2} - 2} \quad 4\sqrt{2} \times 4\sqrt{2} = 16 \times 2 = 32$$

$$= \frac{32}{2\sqrt{2} - 2} \times \frac{2\sqrt{2} + 2}{2\sqrt{2} + 2}$$

$$= \frac{32(2\sqrt{2} + 2)}{(2\sqrt{2} - 2)(2\sqrt{2} + 2)}$$

$$= \frac{64\sqrt{2} + 64}{8 + \cancel{4\sqrt{2}} - \cancel{4\sqrt{2}} - 4}$$

$$= \frac{64\sqrt{2} + 64}{4}$$

$$= 16\sqrt{2} + 16$$

$$= 16(\sqrt{2} + 1)$$

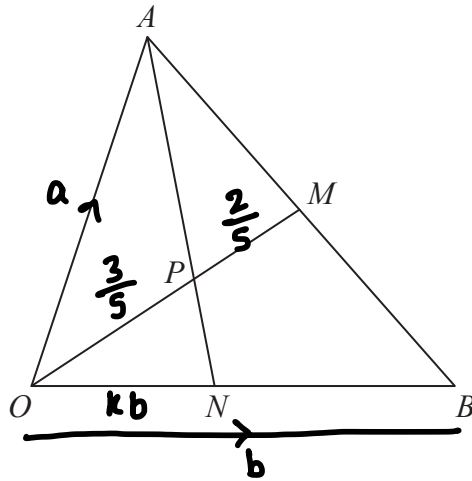
(Total for Question 20 is 3 marks)

DO NOT WRITE IN THIS AREA

DO NOT WRITE IN THIS AREA

DO NOT WRITE IN THIS AREA





OAB is a triangle.

OPM and APN are straight lines.

M is the midpoint of AB .

$$\vec{OA} = a \quad \vec{OB} = b$$

$$OP:PM = 3:2$$

Work out the ratio $ON:NB$

$$\vec{AB} = \vec{AO} + \vec{OB}$$

$$= -a + b$$

$$\vec{AM} = \frac{1}{2}(\vec{AB})$$

$$= \frac{1}{2}(-a + b)$$

$$= -\frac{1}{2}a + \frac{1}{2}b$$

$$\vec{OM} = \vec{OA} + \vec{AM}$$

$$= a + -\frac{1}{2}a + \frac{1}{2}b$$

$$= \frac{1}{2}a + \frac{1}{2}b$$

$$\vec{OP} = \frac{3}{5}(\vec{OM})$$

$$= \frac{3}{5}\left(\frac{1}{2}a + \frac{1}{2}b\right)$$

$$= \frac{3}{10}a + \frac{3}{10}b$$

$$\begin{aligned} \vec{AP} &= \vec{AO} + \vec{OP} \\ &= -a + \frac{3}{10}a + \frac{3}{10}b \end{aligned}$$

$$= -\frac{7}{10}a + \frac{3}{10}b$$

$$\vec{AN} = x(\vec{AP})$$

$$= x\left(-\frac{7}{10}a + \frac{3}{10}b\right)$$

$$= -\frac{7}{10}ax + \frac{3}{10}bx$$

$$\vec{AN} = -a + kb$$

$$-\frac{7}{10}ax = -a$$

$$\frac{3}{10}bx = kb$$

$$-\frac{7}{10}x = -1$$

$$\frac{3}{10}x = k$$

$$\times 10 \quad \times 10$$

$$\frac{3}{10}\left(\frac{10}{7}\right) = k$$

$$-7x = -10$$

$$\frac{3}{7} = k$$

$$\div -7 \quad \div -7$$

$$x = \frac{10}{7}$$

$$ON = \frac{3}{7}$$

$$NB = \frac{4}{7}$$

$$3:4$$

(Total for Question 21 is 5 marks)



22 There are only green pens and blue pens in a box.

There are three more blue pens than green pens in the box.

There are more than 12 pens in the box.

Simon is going to take at random two pens from the box.

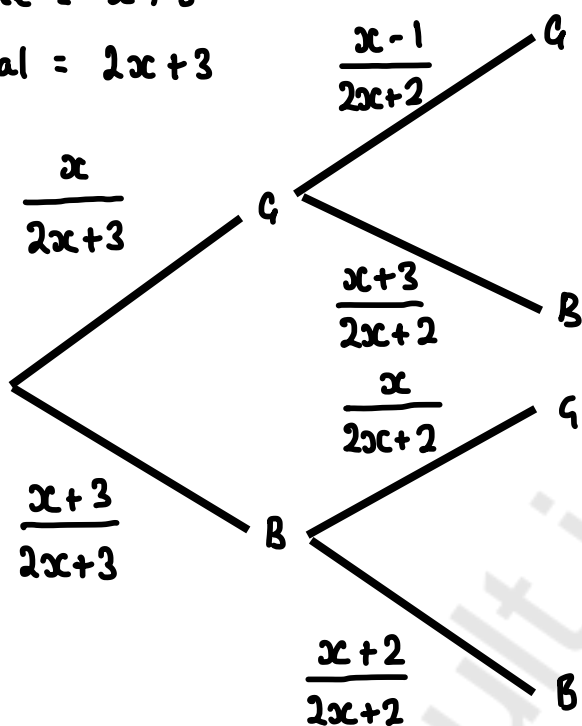
The probability that Simon will take two pens of the same colour is $\frac{27}{55}$

Work out the number of green pens in the box.

Green = x

Blue = $x + 3$

Total = $2x + 3$



$$GG = G \times G = \frac{x}{2x+3} \times \frac{x-1}{2x+2} = \frac{x(x-1)}{(2x+3)(2x+2)}$$

$$BB = B \times B = \frac{x+3}{2x+3} \times \frac{x+2}{2x+2} = \frac{(x+3)(x+2)}{(2x+3)(2x+2)}$$

$$GG + BB = \frac{27}{55}$$

$$\frac{x(x-1)}{(2x+3)(2x+2)} + \frac{(x+3)(x+2)}{(2x+3)(2x+2)} = \frac{27}{55}$$

$$\frac{x^2 - x}{(2x+3)(2x+2)} + \frac{x^2 + 5x + 6}{(2x+3)(2x+2)}$$

$$\frac{2x^2 + 4x + 6}{(2x+3)(2x+2)} = \frac{27}{55}$$

$$\frac{x^2 + 2x + 3}{4x^2 + 10x + 6} = \frac{27}{55}$$

$$\frac{x^2 + 2x + 3}{2x^2 + 5x + 3} = \frac{27}{55}$$

$$55(x^2 + 2x + 3) = 27(2x^2 + 5x + 3)$$

$$55x^2 + 110x + 165 = 54x^2 + 135x + 81$$

$$x^2 - 25x + 84 = 0$$

$$(x-4)(x-21) = 0$$

$$x-4=0 \quad x-21=0$$

$$+4 \quad +4 \quad +21 \quad +21$$

$$x=4 \quad \boxed{x=21}$$

21

(Total for Question 22 is 6 marks)

TOTAL FOR PAPER IS 80 MARKS

